



Autoimmune Genetics Laboratory



Visitor information

Professor Adrian Liston

Contact details

adrian.liston@vib.be

Ph: +32 (0) 163 30934

Admin: +32 (0) 163 30583 (genia.debrauwer@med.kuleuven.be)

Lab: +32 (0) 163 30590

Fax: +32 (0) 163 30591

<http://liston.vib.be>

Laboratory location

Campus Gasthuisberg

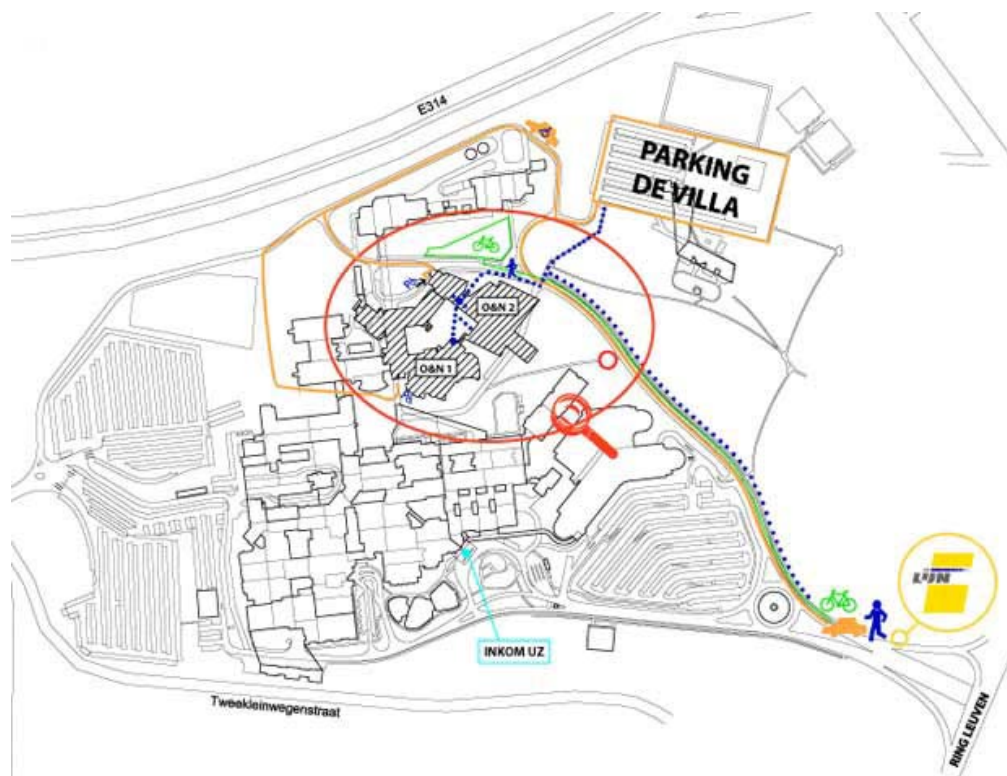
Department of Experimental Medicine

O&N2 bus 1026 (on the 10th floor, follow signs for “Autoimmune Genetics”)

Herestraat 49

B-3000 Leuven

Belgium



Travel information

Getting to Leuven

Brussels National Airport - Leuven

Brussels National Airport is situated between Leuven and Brussels. Traveling to and from the airport is very easy by train. There is a direct train link from Leuven to the airport (~20 minutes either direction).

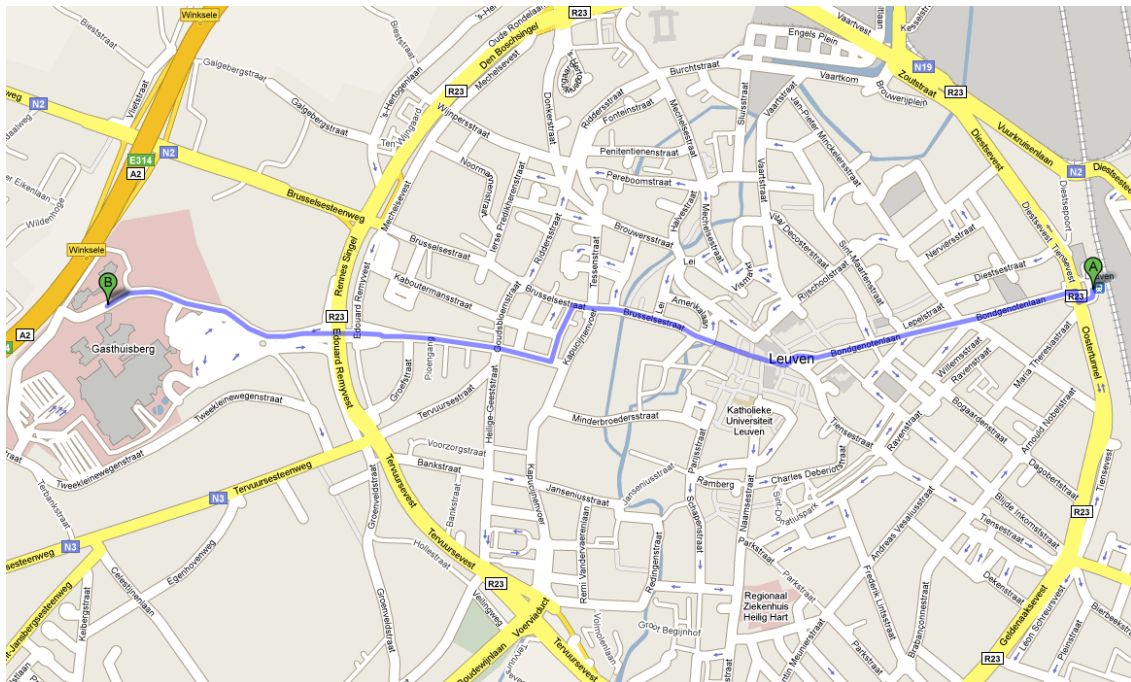
The train station of Brussels National Airport is located in the basement (level -1) of the airport terminal building itself. <http://www.brusselsairport.be/>

Train connections you can find on:
<http://www.b-rail.be/>

Getting to Gasthuisberg

Campus Gasthuisberg is on the opposite side of Leuven to the train station, but easy to reach by bus. The bus station is next to the railway station. Several bus lines (busses 14, 16, 333, 335, 338) leave on platform 2 about every 5 minutes to the Gasthuisberg Hospital which is the terminal. Or bus line nr. 600 leave on platform 10 about every 10 minutes. The bus number 3 leaves every 20 minutes and goes to the Gasthuisberg Hospital and then Campus Gasthuisberg (the terminal).

From Campus Gasthuisberg the bus stop is next to the building O&N2, where the laboratory is situated. From Gasthuisberg Hospital the front desk can give directions to O&N2 or there is an outdoor walking path to the back of the complex where the campus is situated. Estimated duration: ~20-30 min (bus and walking).



Leuven